



Programme of Events

Friday 19th June to
Sunday 5th July 2026

Winchester | Sparsholt | Stockbridge | Alresford
Medstead | Farringdon | Whitchurch

26 Venues

17 Days

65 Events

To view the full programme to go:
www.garden-festival.co.uk

The Garden Festival 2026

WELCOME

We hope you like this exciting programme we have put together for this the 2nd year of The Winchester & District Garden Festival. As you will see, it is more than just open gardens – it embraces everything that is very broadly linked to gardens and horticulture.

There is music in gardens, art and sculpture in gardens, well-being in gardens, poetry, readings, talks, plays, workshops, sustainability, allotment gardening, market gardening, herbal medicine, wine-linked events and so on. It takes place at 26 lovely, and sometimes exclusive, venues in and around Winchester, to include Stockbridge, Sparsholt, Alresford, Medstead, Farringdon and Whitchurch.

More information on all 65 of this year's events can be found on our website:

www.garden-festival.co.uk

athertongreenart



Summer Show
20th June - 28th June 2026



Creating vibrant **contemporary** collections

Farringdon Place Church Road, Upper Farringdon, Alton Hampshire, GU34 3EH

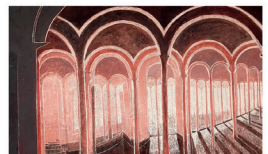


Open 11am - 5pm

Closed Wednesday 25th June

A unique collection of contemporary art including paintings, prints, sculptures & ceramics by a selection of artists in our gallery.

And don't miss our outdoor sculpture trail in our beautiful garden.



Find us on Instagram @athertongnart
or contact us at sue@athertongreen.art
or by phone 07890 098036



The Garden Festival 2026



FRIDAY 19TH JUNE

Swedish Midsommar Celebration

Oram's Arbour, Clifton Road, Winchester,
SO22 5BU | 5.30pm - 8.30pm

Celebrate midsummer Swedish style! The evening will start with the everyone helping decorate the Swedish maypole with the support of Featherstone Flowers. Then, there will be a floral crown making opportunity for children and grown-ups, followed by Swedish songs around the maypole performed by Stockbridge Primary School. Local folk duo, Confluence, will play Swedish music, there will be meatballs and Swedish fika on sale with our local Stuga Swedish Bakery, and then Irish shanty music with ShantyHead to create a rousing end to the evening. Bring a picnic, rugs or tables and chairs. Tickets free – but please book your place online

Watercolour Well-being Workshop

Stem and Green Flower Farm, Down Farm Lane, SO23 7LA | 10am – 1pm

Lisa Gardner is a watercolour artist inspired by the natural world, the connection between breath and brushwork, and rare wild flower species on the edge of extinction. Explore free-flowing painting techniques & breathing meditations to nurture your creativity and inspire calm. After a tour of the flower field and a chance to pick a vase of flowers, Lisa will take you through how to draw on your creative voice, trust your intuition and be inspired by vibrant seasonal botanicals. Tickets £75



SATURDAY 20TH JUNE

Exhibition in the garden by The Wessex Sculptors

Quaker Meeting House Garden, Colebrook Street, Winchester, SO23 9LH | 10am - 5pm

Enjoy the varied and skilled work of the Wessex

Sculptors displayed in the little-known gardens of The Quaker Meeting House off Colebrook Street. 10 artists will be on display. There will also be artists sketching and painting the gardens on certain days. Free Entry

Contemporary Sculpture Trail & Art Gallery Summer Show

Atherton Green Art Gallery & Garden, Farringdon, near Alton, GU34 3EH |

11am - 5pm daily until 28th June

An exhibition of contemporary art, including painting, sculpture and ceramics with an outdoor sculpture trail. Set in the house and gardens of a former Victorian rectory. Free admission

The Gatehouse Studios Artists' Exhibition and Workshops

The Gatehouse Studios and Garden, 15 St. James Lane, Winchester, SO22 4NX | 11am - 4pm

Enjoy the work of 9 eclectic local artists displaying in this unique location and garden at the entrance to the cemetery. Free entry

Festival in the Garden

The March Hare, Prior's Dean Road, Winchester. SO22 6JN | 1pm until late

Join us for a community-led day in this pub garden with a mix of local stalls including a face painter, bakery, crafts stalls and plant stall, plus an all-day BBQ, bouncy castle and live music from Audio Pirates to round off the day. Free entry

Flower Pressing Workshop

Stem and Green Flower Farm, Down Farm Lane, SO23 7LA | 10am - 1pm

Join artist Lucy Whitfield for this three-hour workshop, to guide you through all the elements and top tips of flower pressing. Pick flowers from the field and learn how to press. Later, arrange some pressed flowers to create a beautiful work of art. Cake and tea. Tickets £85



A Guided Flower Farm Tour with Featherstone Flowers

Tithe Barn, Berry Court Farm, Church Hill,
Nether Wallop, SO20 8EY | 2pm - 4.30pm

A guided tour of the flower farm with the horticultural team with each guest receiving a small posy of Hampshire grown flowers to take home.

Tickets £35

Contemporary Sculpture Trail & Art Gallery Summer Show

Atherton Green Art Gallery & Garden,
Farrington, near Alton, GU34 3EH |

11am - 5pm (See Saturday 20th June for details)



WEDNESDAY 24TH JUNE

Musical Midsummer Soiree

The Deane House Garden, Woodman Lane,
Sparsholt, SO21 2LR | 6.30pm - 10pm

Dress up, bring a party of friends and a picnic, and enjoy a relaxing evening in the beautiful and extensive gardens of The Deane House with music by B Natural Jazz, The Hyde String Quartet, Nancy Longland (soprano) and Sam Lester (piano). An event not to be missed!

Tickets £22.50



THURSDAY 25TH JUNE

Winchester's Biggest Garden, St Giles Hill Park. Past, present and future

Meet at Abbey Gardens, off The Broadway,
Winchester, SO23 9BE | 10.30am - 12pm

A short walking tour to discover a deep history through to today's green lungs - and what the future might hold - this tour reveals the stories behind the hill overlooking Winchester.

Tickets £6 (includes light refreshments)

Exhibition with Wessex Sculptors

Quaker Meeting House Garden, Colebrook Street,
Winchester, SO23 9LH | 10am - 5pm

(See Saturday 20th June for details)

Contemporary Sculpture Trail & Art Gallery Summer Show

Atherton Green Art Gallery & Garden,
Farrington, near Alton, GU34 3EH |

11am - 5pm (See Saturday 20th June for details)

Evening Opening - Contemporary Sculpture Trail, Art Gallery Summer Show & Wine Tasting

Atherton Green Art Gallery & Garden, Farrington,
near Alton, GU34 3EH | 6pm - 8.30pm

An exhibition of contemporary art, including painting, sculpture and ceramics with an outdoor sculpture trail. Set in the house and gardens of a former Victorian rectory. Otium Wine Estate, Hampshire's newest vineyard, will be doing an exclusive preview of their sparkling wines, ahead of their launch on 27th June. Tickets free but must be booked in advance.

An Introduction to Block Printing Workshop

Dunley Manor, Dunley, near Whitchurch,
RG28 7PU | 6pm - 8.30pm

Come and spend an evening exploring the joy of block printing when you will get a chance to design an item of your choice: tea towel, cushion cover or tote bag. A glass of prosecco and canapés included.

Tickets £45 (limited to 10 people)

Fire Feast at The Tichborne Arms

The Tichborne Arms, Tichborne, near Alresford,
SO24 0NA | 7pm

Fire Feasts are back at The Tichborne Arms. For one night only, we'll be outside and cooking entirely over fire, letting the garden and the grill take centre stage.

Enjoy a BBQ feast of beautifully cooked meats, alongside vibrant salads and warm flat-breads

For tickets see Garden Festival website.



Floral bloom gathering & painting workshop with Becky Clarke

Stem and Green Flower Farm, Down Farm Lane, Winchester, SO23 7LA | 10am - 1pm

Author, artist and illustrator Becki Clark is joining us to lead this master-class. June is a perfect time to capture the delicate beauty of the farm. The workshop will begin with picking blooms from the flower field. Becki will then take you step by step through how she captures them in watercolour and ink. Tea and cake included. Tickets £75

Exhibition with the Wessex Sculptors

Quaker Meeting House Garden, Colebrook Street, Winchester, SO23 9LH | 10am - 5pm
(See Saturday 20th June for details)

Contemporary Sculpture Trail & Art Gallery Summer Show

Atherton Green Art Gallery & Garden, Farringdon, near Alton, GU34 3EH | 11am - 5pm (See Saturday 20th June for details)

SATURDAY 27TH JUNE

Willow Weaving with Louise Brown

Stem & Green Flower Farm, Down Farm Lane, Winchester, SO23 7LA | 10am - 1pm

Basket maker and willow weaving expert Louise Brown will lead this master-class. Learn the basics from manipulating and twisting the willow to essential techniques. Together you'll make a beautiful willow plant support for flowers and plants. Or, simply statuesque shape for your border (even without plants). Tickets £85

Dean Garnier Garden – Meet the volunteers

Winchester Cathedral Inner Close, Winchester, SO23 9LS | 2pm - 4pm

Chat to knowledgeable volunteers and learn more about this small historic garden tucked away in the Cathedral Inner Close. Free entry

Art In the Garden

The Yard Studios, 4 Wharf Hill, Winchester, SO23 9NQ | 11am - 5pm (See 26th June for more details)

A Floral Extravaganza in Art

Jewry Street Studios, 5A Jewry Street, Winchester, SO23 8RZ | 10am - 5pm

Come and view the new art studios in Jewry Street where 5 acclaimed artists will be exhibiting and selling their work influenced by flowers, gardens and landscapes. Free entry

Exhibition with Wessex Sculptors

Quaker Meeting House Garden, Colebrook Street, Winchester, SO23 9LH | 10am - 5pm
(See Saturday 20th June for details)

Contemporary Sculpture Trail & Art Gallery Summer Show

Atherton Green Art Gallery & Garden, Farringdon, near Alton, GU34 3EH | 11am - 5pm (See Saturday 20th June for details)

Experimental Photography Workshop - Chemi-Lumens with Eileen White

The Gatehouse Studios, 15 St James' Lane, Winchester, SO22 9NX | 10.30am - 2.30pm or 2pm - 4pm

In this workshop, you will be provided with all the necessary materials to create your own chemistry from plants in The Gatehouse's garden. The joy of using a handmade alternative to toxic commercial chemistry means the local ecology of the site is embedded into the work, as well as being far more sustainable and caring. For full details and information on Chemi-Lumens go to: www.garden-festival.co.uk or view on our App. Workshop £25

DOWNLOAD OUR
NEW THE GARDEN
FESTIVAL APP FROM
THE GOOGLE PLAY STORE



The Garden Festival 2026



SUNDAY 28TH JUNE

In an English Country Garden

The Deane House Garden, Woodman Lane, Sparsholt, SO21 2LR | 3pm - 7pm

Come and admire the beautiful and extensive gardens of The Deane House while enjoying an afternoon of performances dotted around the various parts of the estate. With poetry, readings, music, art displays, ceramics workshops, well-being sessions, wine tastings, drop-in painting classes – every part of the various gardens will be filled with something delightful. Or simply bring your friends, a picnic, your tables and chairs and savour this glorious setting with magnificent views over the Hampshire countryside.

Tickets £15

Winchester's Biggest Garden, St Giles Hill Park. Past, present and future

Meet at Abbey Gardens, off The Broadway, Winchester, SO23 9BE | 4pm - 5.30pm

A short walking tour to discover a deep history through to today's green lungs - and what the future might hold - this tour reveals the stories behind the hill overlooking Winchester.

Tickets £6 (includes light refreshments)

The Elegant Garden Affair

Winchester Royal Hotel, St Peter Street, Winchester, SO23 8BS | 1.30pm - 4.30pm

Experience an afternoon of refined beauty and relaxed sophistication in the delightful walled garden of the hotel. Enjoy a glass of sparkling wine on arrival, live music creating a gentle, uplifting atmosphere, a stylish and inspiring fashion show, an engaging talk on garden design by DP Garden Design, followed by a beautifully presented afternoon tea, served at elegantly dressed tables with crisp linens, surrounded by the charm of the garden in full bloom. Tickets £35

Exhibition with the Wessex Sculptors

Quaker Meeting House Garden, Colebrook Street, Winchester, SO23 9LH | 10am - 5pm

(See Saturday 20th June for details)

Art In the Garden

The Yard Studios, 4 Wharf Hill, Winchester, SO23 9NQ | 11am - 5pm (See 26th June for more details)

Contemporary Sculpture Trail & Art Gallery Summer Show

Atherton Green Art Gallery & Garden,

Upper Farringdon, near Alton, GU34 3EH |

11am - 5pm (See Saturday 20th June for details)



MONDAY 29TH JUNE

Gardens, Landscapes & Horticulture in Art Exhibition

Milner Hall, St Peter's Church, Jewry Street, Winchester, SO23 8RY | 10am - 5pm with

Preview Evening from 6 - 8pm

Come and admire the work of 16 talented local artists and glass makers displayed in this lovely, little-known city centre converted chapel set in pleasant gardens. All work on display will be for sale. Access via Jewry Street or St. Peter's Street. **Free entry**

A Guided Pick Your Own Flowers experience with Featherstone Flowers

Tithe Barn, Berry Court Farm, Church Hill, Nether Wallop, SO20 8EY | 2pm - 4.30pm

A group guided tour of the flower field led by a Featherstone's team member showing how to best harvest your flowers for maximum vase life together with information on how flowers are grown at the farm. Tickets £35



 **TUESDAY 30TH JUNE**
Gardens, Landscapes & Horticulture in Art Exhibition
Milner Hall, St Peter's Church, Jewry Street,
Winchester, SO23 8RY | 10am - 5pm
(See 29th June for details)

 **WEDNESDAY 1ST JULY**
Gardens, Landscapes & Horticulture in Art Exhibition
Milner Hall, St Peter's Church, Jewry Street,
Winchester, SO23 8RY | 10am - 5pm
(See 29th June for details)

Come to the Flower Field: Pick, Arrange and Journal
Lower Norton Flower Farm, Norton, Sutton
Scotney, SO21 3NE | 10am - 12noon
Spend a relaxed morning in the flower field at Lower Norton Flower Farm. Pick a jam jar full of seasonal British grown flowers, learn how to cut and arrange them, then use your blooms as inspiration for simple journaling techniques. No artistic experience is needed, just come and enjoy flowers, creativity and a little time in nature. Tickets £49

 **THURSDAY 2ND JULY**
Gardens, Landscapes & Horticulture in Art Exhibition
Milner Hall, St Peter's Church, Jewry Street,
Winchester, SO23 8RY | 10am - 5pm
(See 29th June for details)

 **FRIDAY 3RD JULY**
Gardens, Landscapes & Horticulture in Art Exhibition
Milner Hall, St Peter's Church, Jewry Street,
Winchester, SO23 8RY | 10am - 5pm
(See 29th June for details)

The Market Garden Dinner
Hampshire Pantry, Badger Farm Road,
Winchester, SO23 9RZ | 6.30pm
Come and enjoy a delicious supper sitting at long tables in the middle of a market garden which has

produced the vegetables on your plate! Hampshire Pantry, Winchester's, much acclaimed Farm Shop and the market garden is their latest project. With magnificent views and amazing food and drinks, this is an exciting new, fabulous community event.
Tickets £50

Come to the Flower Field: Pick, Arrange and Journal
Lower Norton Flower Farm, Norton, Sutton
Scotney, SO21 3NE | 10am - 12noon
(See 1st July for details)

SATURDAY 4TH JULY
Gardens, Landscapes & Horticulture in Art Exhibition
Milner Hall, St Peter's Church, Jewry Street,
Winchester, SO23 8RY | 10am - 5pm
(See 29th June for details)

Community Allotment Gardening Open Day with Incredible Edible Winchester
Edington Road, Winchester, SO23 7AF (Opposite the Arthur Road bus stop) | 10am - 2pm
Tour the allotments with volunteers, ask your allotment questions, observe the work in progress and even give a helping hand (if desired). There will also be a seed identification activity. Free entry

Summer Hand Tied Bouquet Workshop
Stem & Green Flower Farm, Down Farm Lane,
Winchester, SO23 7LA | 10am - 1pm
Learn how to pick and arrange a beautiful, fresh bouquet of garden flowers. Pick some gorgeous blooms from the flower field to, Then, after a cup of tea and a slice of homemade cake, we'll show you how to make a show stopping hand-tied garden bouquet. This is also how we arrange all our vase flowers.
Tickets £65 (limited to 10 people)



The Garden Festival 2026

Dinner on the Terrace in partnership with Hampshire Pantry

The Deane House, Woodman Lane, Sparsholt, SO21 2LR | 6.30pm - 9.30pm
The evening will begin with botanical cocktails and canapés in one of the magnificent gardens of The Deane House. Then enjoy a delicious 2 course dinner with wines served on the panoramic Terrace. Crafted by the acclaimed chef at Hampshire Pantry, it will be created from ingredients from their own market garden a mere 6 miles away. During your dinner there will be musical interludes and a chance to wander around the extensive gardens.
Tickets £75 to include 3 specially selected wines or non-alcoholic drinks

Hampshire Market Garden Summer Gala

The Lockerley Estate, Manor Farm, East Tytherley | 6pm

For this final weekend of The Garden Festival, Hampshire Market Garden is having a special Summer Gala at their venue. The gardens will be open to browse, there will be stalls, live music, and local food and drink. See out the festival in style with a celebration of food where it is grown. **Free entry**



SUNDAY 5TH JULY

Gardens, Landscapes & Horticulture in Art Exhibition

Milner Hall, St Peter's Church, Jewry Street, Winchester, SO23 8RY | 10am - 5pm
(See 29th June for details)



Modern, Contemporary, Traditional Designs

Professional, Bespoke Garden & Landscape Design Solutions by Dan Pulling

- Complete bespoke design package
- Setting out and construction process
- Management and tender practice
- Planting plans and plant sourcing
- Project monitoring

A garden should add real value to your home if done properly, in the same way an extension or well designed interior can do so too. It is therefore a great investment. You also want to enjoy this outside 'room' of your house to the maximum, otherwise it is simply wasted space.

At DP Garden Design we will take the surrounding area, style of our clients home, scale, materials and planting into consideration to design an outdoor space you will treasure large or small.

Please contact us on info@dpgardendesign.co.uk, 07376 114531, and visit our website at www.dpgardendesign.co.uk



OPERA ANYWHERE

PRESENTS

GILBERT AND SULLIVAN'S
COMIC OPERETTA



HMS PINAFORE

or
The lass that loved a sailor



The Deane House

Sparsholt, Winchester, SO21 2LR

Sunday 21st June 4.30pm

Tickets: £22.50 adults, £15 under 18, £160 for group of 8

www.garden-festival.co.uk

*Picnics are welcome and please provide your own seating,
even tables can be accommodated!*





For more information

There is much more information on all the festival events on the web-site or on our new, downloadable Garden Festival App. This includes information on last minute additional events, accessibility and wet weather arrangements.

Tickets

Tickets for all events are available on Eventbrite.
Please go to <https://bit.ly/3PteKtG> where you can find them all.
Any problems? Just contact us!

Contact

Email: events@garden-festival.co.uk
Telephone: 07716 864 138

Social Media

-  The Winchester & District Garden Festival
-  @thewinchestergardenfestival
-  @GardenFestival



The Garden Festival is a Winchester-based, non-profit making community organisation entirely run by volunteers. This year over 100 individuals and organisations are kindly giving their time to help make the festival a success for the enjoyment and benefit of local people. A huge thank you to them all.

Supporters

Woodman Wines | IncuHive | Winchester School of Art |
Hampshire Anglo Scandinavian Society | Winchester Rotary Club

